



**DRUG-IMPAIRED DRIVING**  
**LEARNING CENTRE**

# Drugs and Driving

**Latest research and data trends**

Heather Woods-Fry, Ph.D.  
Research Associate, TIRF  
Ontario Road Safety Forum  
October 11<sup>th</sup>, 2018



# What is the Drug-Impaired Driving Learning Centre (DIDLC)?



- **Web-based resource summarizes latest research about drug-impaired driving from several disciplines.**
- **Compiles and synthesizes latest research in an accessible, user-friendly format.**
- **Four modules structured in Q & A format to help users access topics of interest.**
  - Drug-impaired driving problem in terms of magnitude, characteristics and perceptions;
  - Impairing effects of drugs on driving;
  - Laws and penalties; and,
  - Tools and technologies to identify drug-impaired drivers.

# Downloads and resources



- **Factsheets summarize and highlight key topics of each module and are available for download**
  - Prevalence of drug-impaired driving by country
  - Effects of drugs on driving by drug type
  - Laws & penalties
  - Tools & technologies

## **To be released...**

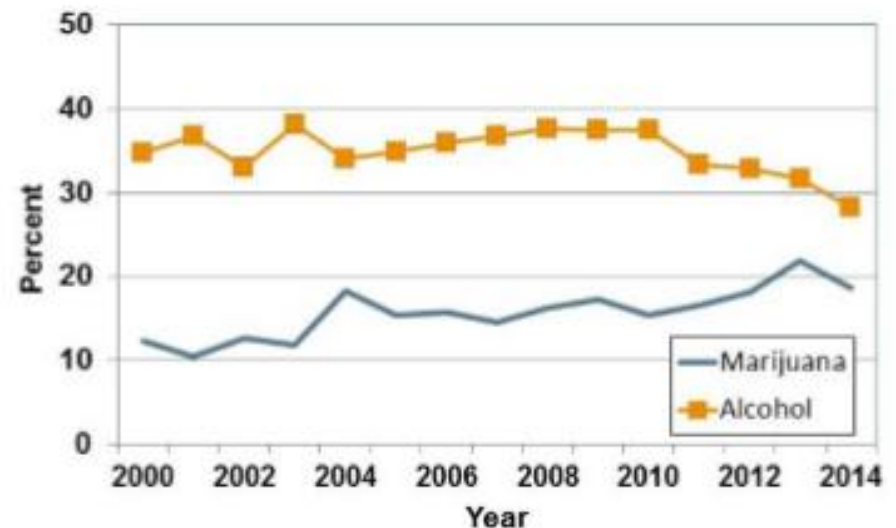
- Marijuana use among drivers in Canada 2000-2015 (Oct. 11<sup>th</sup>)
- Road Safety Monitor 2017: Drugs & Driving

# Marijuana and Driving



- **From 2000 to 2014:**
  - Percentage of fatally injured drivers that tested positive for marijuana has generally increased.
  - Whereas those testing positive for alcohol has declined.

Percentage of fatally injured drivers testing positive for marijuana and for alcohol: Canada, 2000-2014



Source: TIRF 2017

# Characteristics: Fatally injured drivers testing positive for marijuana

---



- **Age**
- **Sex**
- **Time of day/day of week**

# Road Safety Monitor 2017: Drugs & Driving



- **Concern about drugged driving**
- **Impairing effects**
- **Use of physical coordination tests**
- **Prevalence within 2hrs of driving (age, sex) in the past 30 days**



**DRUG-IMPAIRED DRIVING**  
**LEARNING CENTRE**

**Drug-Impaired Driving Learning Centre:**

**<http://druggeddriving.tirf.ca/>**

**Traffic Injury Research Foundation**

**<http://www.tirf.ca>**

**[tirf@tirf.ca](mailto:tirf@tirf.ca)**

